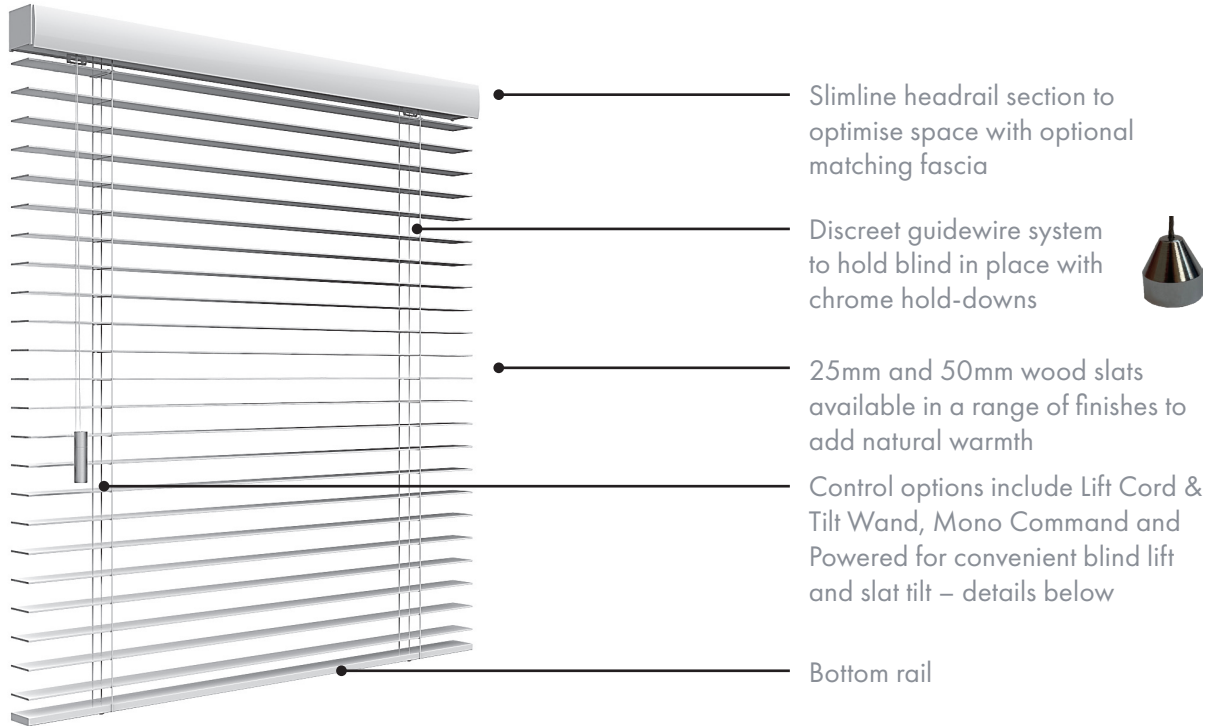




# seaVENETIAN

## Wood



Slimline headrail section to optimise space with optional matching fascia

Discreet guidewire system to hold blind in place with chrome hold-downs



25mm and 50mm wood slats available in a range of finishes to add natural warmth

Control options include Lift Cord & Tilt Wand, Mono Command and Powered for convenient blind lift and slat tilt – details below

Bottom rail

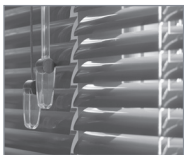
### Traditional venetian blinds purpose-designed for the marine environment

- Custom blinds to fit a broad range of window shapes and sizes
- Space-saving head and bottom rail sections
- Tilting slats for sophisticated light, mood and vision control
- Wide range of wood finishes with accessories to match
- Onboard privacy and comfort
- Cabin light and temperature control
- Reduce UV damage and glare

### Control options



#### Lift Cord & Tilt Wand



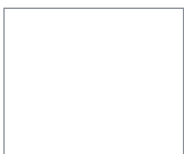
The traditional operation for Venetian blinds which can be placed left or right.

#### Powered



'Hands-free' operation by an electric motor controlled by switch or remote.

#### Mono Command



Tilt, lift and lower functions all in one convenient operation.

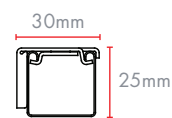
#### Breakapart connector



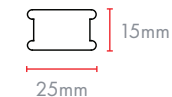
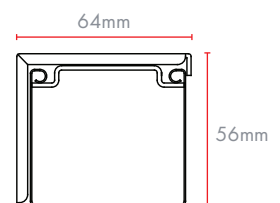
Next generation of stylish and child safe connector keeps cords tidy

### Sectional views

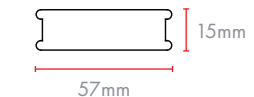
Headrail  
25mm slat



Headrail  
50mm slat



Bottom rail  
25mm slat

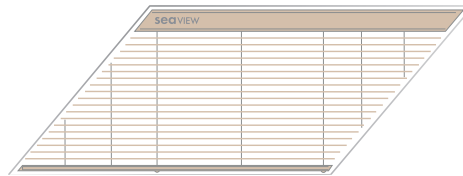
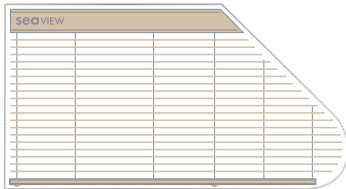
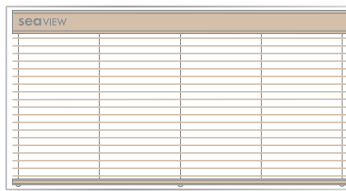
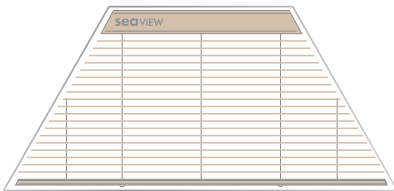
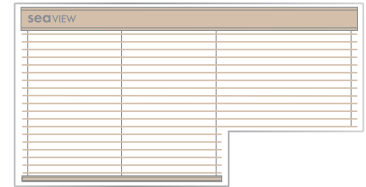
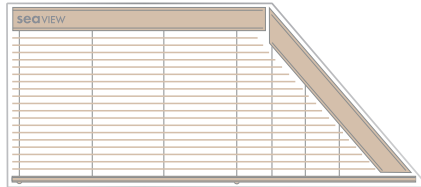
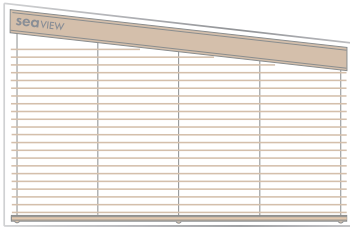


Bottom rail  
50mm slat



# seaVENETIAN Wood

SEAVENTIAN blinds can be shaped to many window configurations.



Drawings are illustrative only.

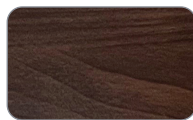
## Wood texture and colour collection



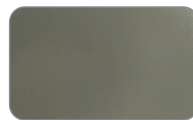
Intense Black



Natural White



Dark Cherry



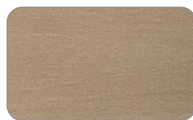
Limestone



Light Bleached Oak



Cherry



Natural



Tiger Eye



Oak



Mahogany



Ebony

Slats available in  
25mm and 50mm  
widths

## Minimum and maximum dimensions:

|                          | Width (X)           | Drop (Y) |
|--------------------------|---------------------|----------|
| Minimum<br>Cord Operated | 270mm               | 200mm    |
| Minimum<br>Mono Command  | 270mm               | 200mm    |
| Minimum<br>Powered       | 500mm               | 200mm    |
| Maximum                  | 2700mm              | 2500mm   |
| Maximum Area             | 3300mm <sup>2</sup> |          |